



## Flat 3, 123 Lynchford Road

Farnborough, GU14 6ET

£1,000 PCM

This luxury first floor one-bedroom flat has a generous sized living area with an open plan kitchen, a large double bedroom with built-in storage space and a modern shower room.

The property is ideally situated in the popular village of North Camp and just a short distance to three railway stations – North Camp Station (0.7 miles), Ash Vale Station (1.2 miles) and Farnborough Station (1.8 miles). It is also within walking distance to the local village shops and has easy access to the A331 and M3.

North Camp Village has museums, wildlife centre, nature reserves, shopping centre, leisure and activity centres plus much more.

PLEASE NOTE - There is no allocated parking with this property, but there is a council car park behind where permits can be acquired

- Ground Floor
- Fitted Kitchen
- Modern Bathroom
- Available Mid December
- NO ALLOCATED PARKING
- Walking Distance To Railway Stations
- Close To Local Amenities
- 5 Weeks' Deposit £1153.84
- Council Tax Band A
- EPC Energy Rating Band (B) 85

### Viewing

Please contact our Fosters Lettings Office on 01252 344333 if you wish to arrange a viewing appointment for this property or require further information.



1



1



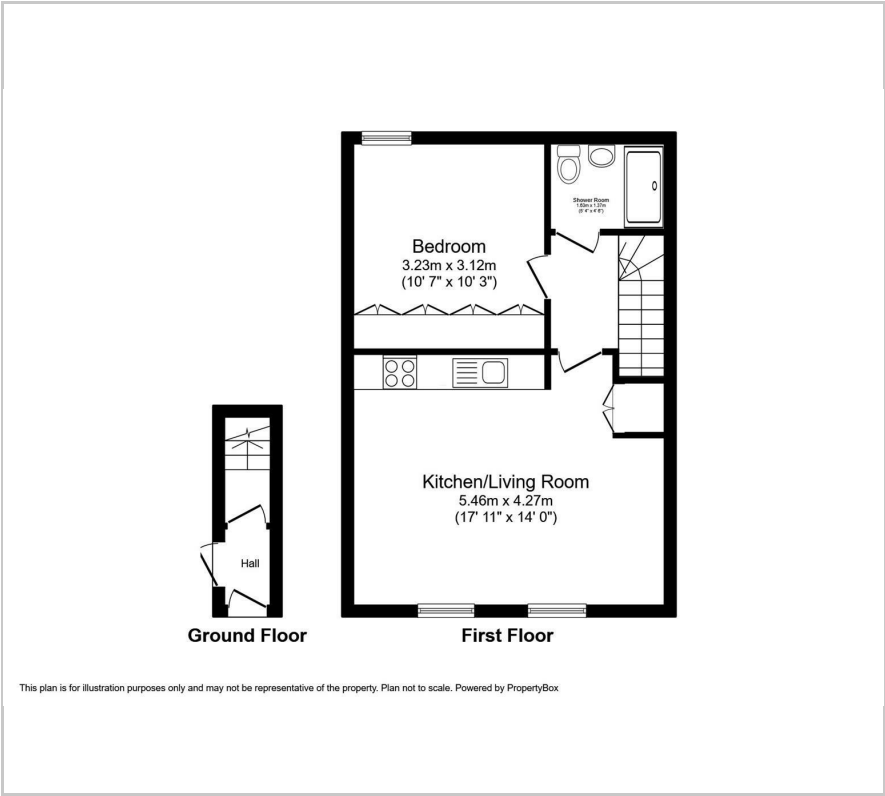
1



B



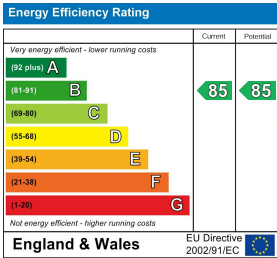
Floor Plan



Area Map



Energy Efficiency Graph



These particulars, whilst believed to be accurate are set out as a general outline only for guidance and do not constitute any part of an offer or contract. Intending purchasers should not rely on them as statements of representation of fact, but must satisfy themselves by inspection or otherwise as to their accuracy. No person in this firms employment has the authority to make or give any representation or warranty in respect of the property.